

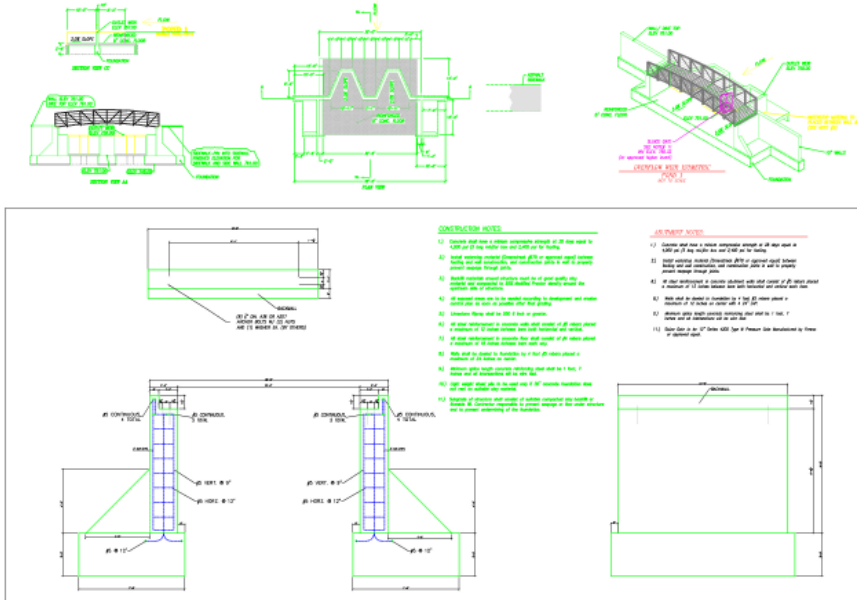
### Project Description

#### Project Overview

Located in Adrian, Michigan, this project involved the rehabilitation of an existing park that used to be a fish hatchery. The existing ponds in the park were dilapidated and poorly used and the parks department requested design to update the park, combine the two fish hatchery ponds into one larger pond, and improve pedestrian access in the park by installing a new trail.

#### Park Improvements and Approximate Design Cost

The estimated construction cost of the completed project is estimated to be approximately \$700,000, while the surveying, engineering, bridge and flood modeling cost was approximately \$25,000.



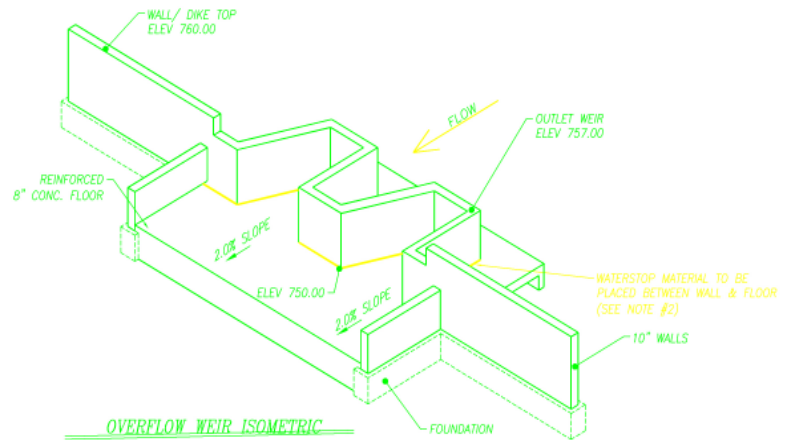
Dam, Weir, and Bridge Interface Detail

#### Project Design Responsibilities

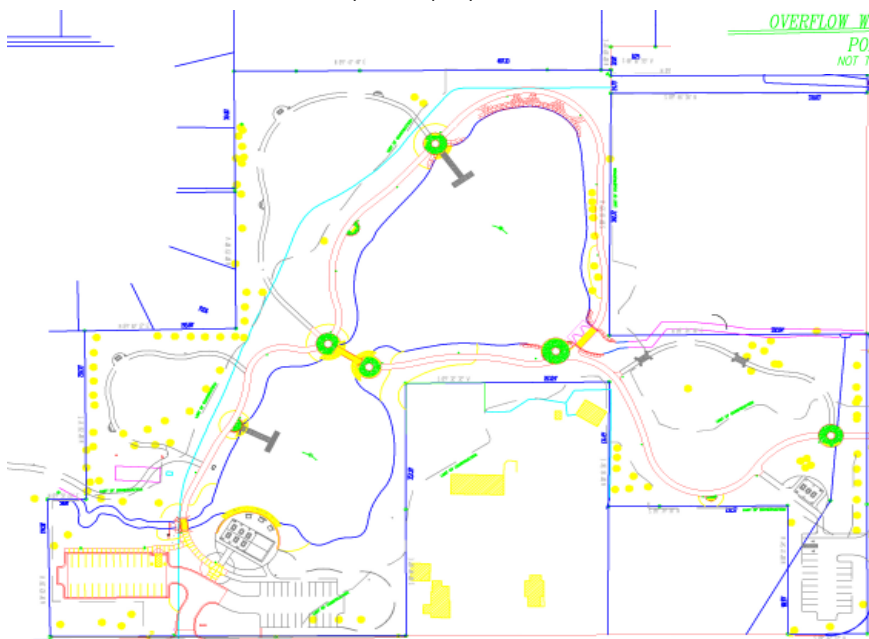
DABEC was acting as a sub-consultant on this project to Lehman and Lehman, Inc. DABEC's responsibilities included: surveying, flood modeling, dam design, and bridge abutment design.

#### Site Constraints

Permitting for the re-construction of the two lakes required extensive submittals and design calculations for the Department of Environmental Quality in Michigan. Additionally, poor soils on site made the design of the dam fill critical for the safety of the project.



Weir and Abutment Isometric Detail



Schematic Park Overview

### Client Reference

**Chuck Lehman, ASLA, FRSA**  
President

**Lehman and Lehman, Inc.**

510 Lincolnway E, Suite C  
Mishawaka, IN 46544-2212

574-257-0255 (phone)

574-257-1966 (fax)

chuck@lehmanandlehman.com