

UTILITY PROJECTS

CELL 18/20-UTILITY STUDY-ALLEN COUNTY

Project Description

Project Overview

Complete utility analysis of the region designated as "Cell 18/20" in the west central part of Allen County, IN. This study included sanitary sewer collection system and potable water supply network preliminary design. The basic components of this study were: Analysis of existing conditions (service level, development status and types, etc.), predictions for future growth and types in parts of Cell 18/20, analysis of sanitary sewer collection components required to service future growth at various time lines throughout the proposed development cycle, and development of preliminary plans and cost estimates to complete the skeleton service system for sanitary and water service.

Study Area Size and Utility Study Cost

The Cell 18/20 (and watershed) study covered about 3,000 acres. Estimates for utility construction cost were approximately \$4M. The study and documentation engineering cost was approximately \$15,000.

Survey and Property Research

Some topographical survey work was completed for this project to verify sanitary inverts, lift station locations and inverts, and other important points. General property ownership mapping was undertaken to determine the likelihood of development for the properties within the study area.

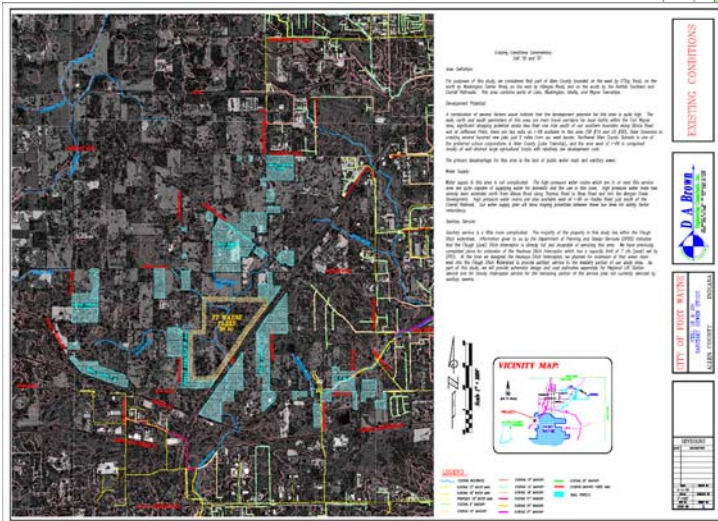
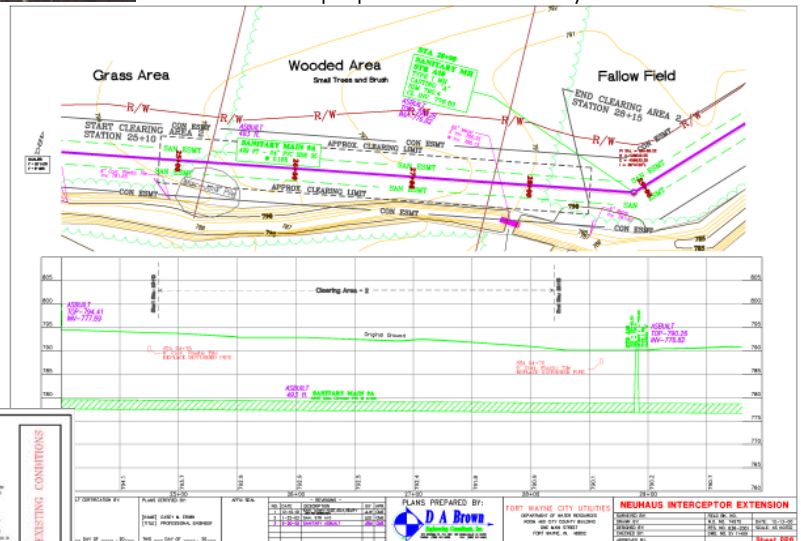


Preliminary Routing Plans

Preliminary Routing Plans were completed as part of this project to illustrate appropriate pipe sizes, grades, and inverts to service the area included within the study limits. These plans were used as the basis for the cost estimates to complete the construction.

Cost Estimates and Phasing Options

Cost estimates were generated for this project on an "event horizon" basis, which allowed for phasing costs to be evaluated and ultimately for the cost of the system to be divided among the new users in the area. Splitting the project into manageable chunks will also allow the City to build service into this area in an organized fashion.



Study Area Existing Conditions Sheet

Plan and Profile Sheet from Plan Set

Client Reference

Paul Powers, P.E., City of Fort Wayne

City County Building
One East Main St., Room 480
Fort Wayne, IN 46802-1804
260-427-2684 (phone)
260-427-1353 (fax)
paul.powers@ci.ft-wayne.in.us